

**WHITE OAK BRIDGE**  
**EXISTING CONDITION**  
Yale Street & I10 Feeder

April 25, 2011



#### **OVERVIEW**

*These photos represent a snapshot of existing condition and, due to the inaccessibility at the bridge's north side, were primarily taken on the south side facing east.*

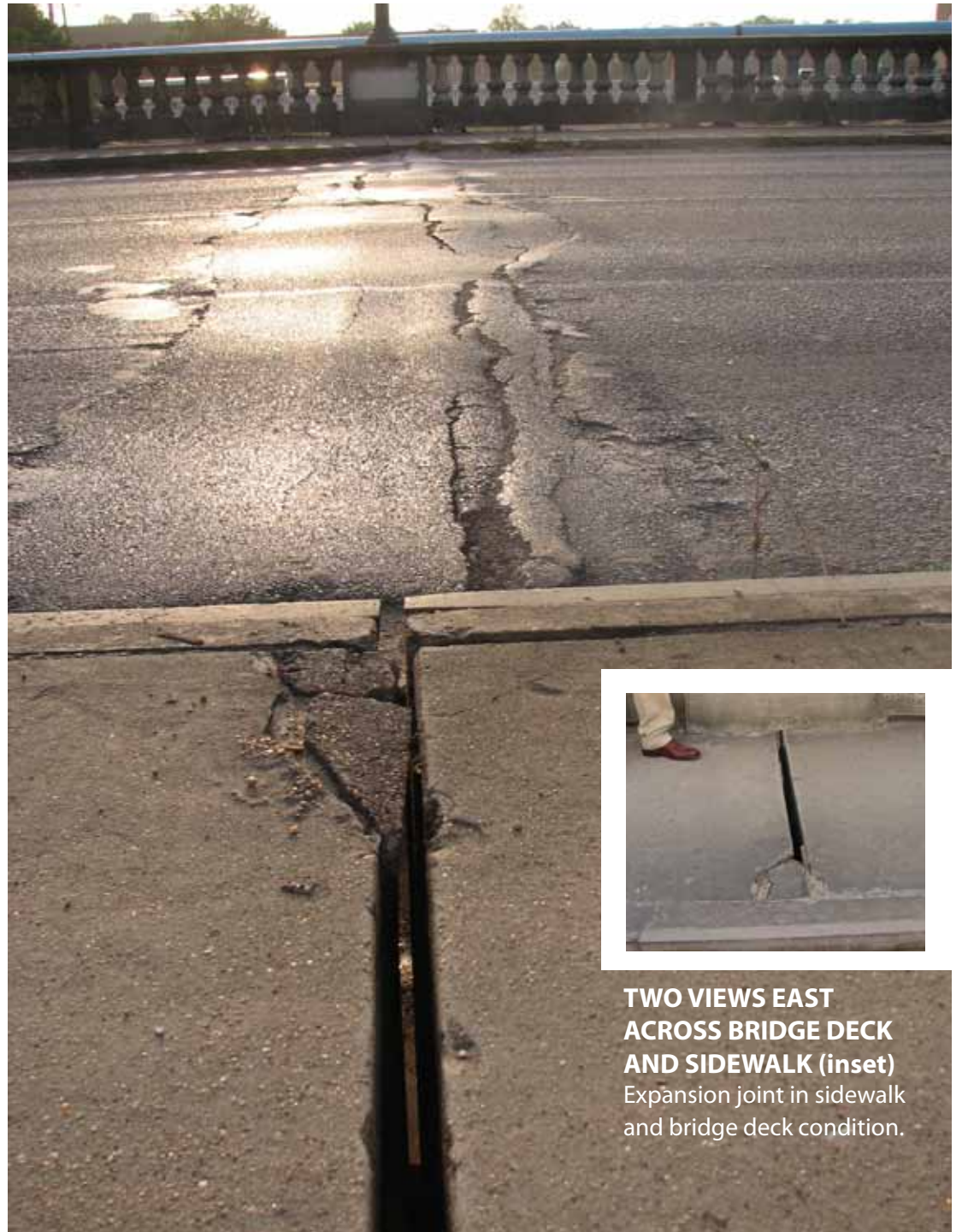
#### **VIEW NORTHBOUND Vehicles traveling south**

The White Oak bridge is a short distance from the I10 and the currently under-construction East-West bound feeder roads. The bridge is load-limited for

40,000 lbs. The Houston Police are charged with enforcing load limits, however, 18-wheeler trucks cross the White Oak bridge on a daily basis. New feeder roads and development are



expected to increase traffic volumes substantially. Due to anticipated congestion, traffic will likely be idling on the bridge while 18-wheeler trucks cross.



**TWO VIEWS EAST  
ACROSS BRIDGE DECK  
AND SIDEWALK (inset)**  
Expansion joint in sidewalk  
and bridge deck condition.



**VIEW AT WEST PILING  
& BRIDGE BANK (inset)**  
Floodwater impacts.



**VIEW UNDER SOUTH  
SIDE OF BRIDGE DECK**

Exposed rusted rebar,  
deck cracks and scour.

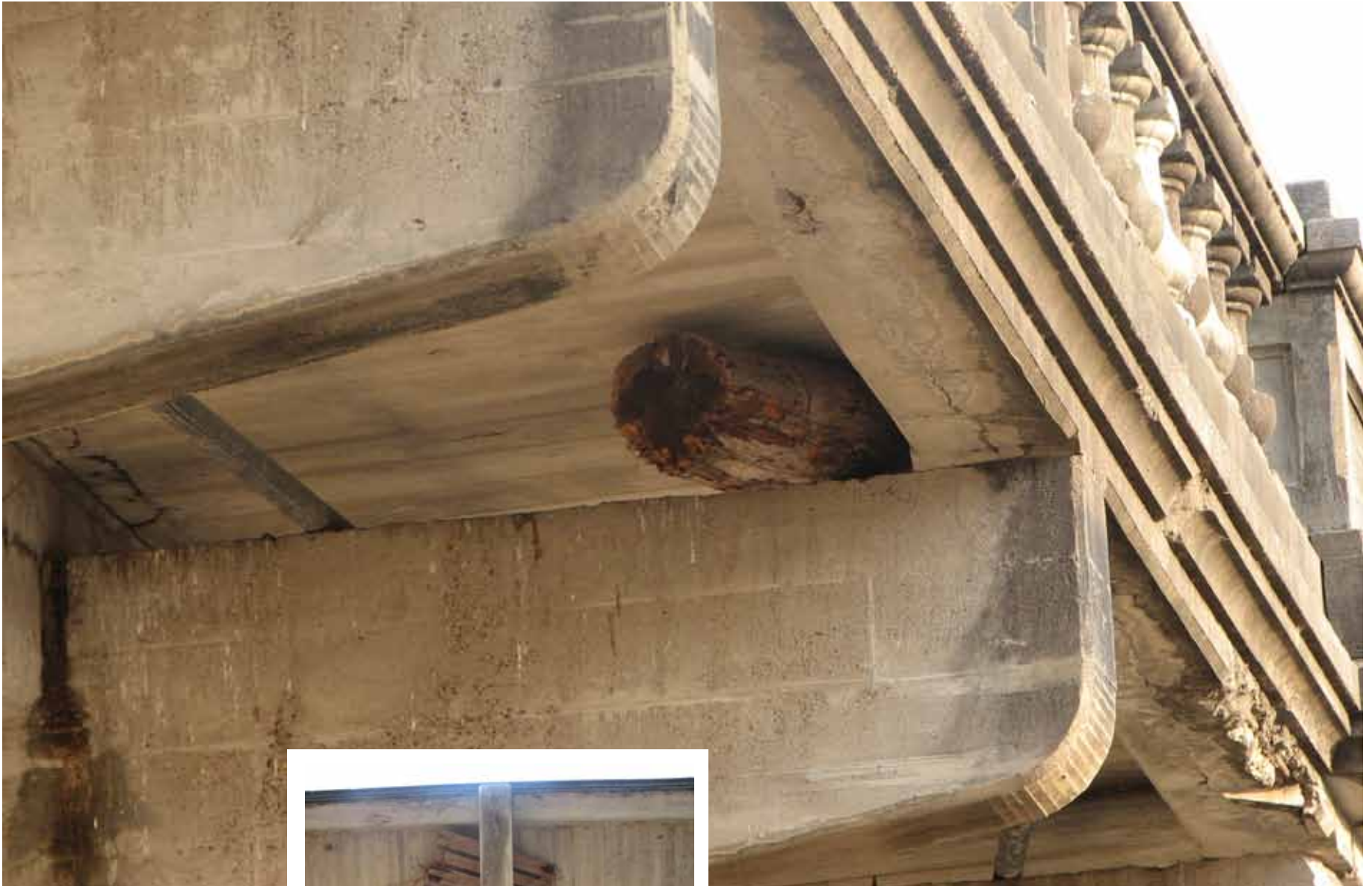


**VIEW UNDER SOUTH  
SIDE OF BRIDGE DECK**  
Exposed rusted rebar,  
holes in concrete, scour.



**VIEW OF SOUTH WEST  
TRUSSES**

Exposed rusted rebar  
and decay.



**VIEW OF FLOOD DEBRIS**

Bridge edge damage to concrete, evidence of floodwater impacts.



**SAFETY CONCERNS**  
**School Bus Traffic**

On Monday April 18, 2011 at 7:30 a.m. I recorded 10 different buses traveling over the White Oak bridge. In the span of 30 minutes, bus numbers 8906, 8908, 9192, 9695, 9577, 9311, 8891 and 8909 were captured on film.